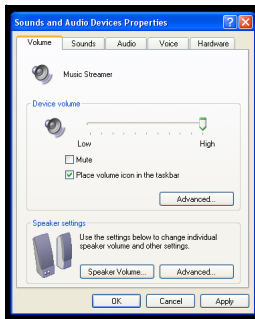


# MUSIC STREAMER and MUSIC STREAMER+ SET-UP GUIDE - PC

Using a standard USB cable, plug the **Music Streamer** or **Music Streamer +** directly into your computer while it is running. Using an appropriate length pair of RCA interconnects (you will absolutely benefit here from using good-quality cable), connect the analog outputs of the **Music Streamer** or **Music Streamer +** to an unused line-level input on your preamplifier, integrated amp, or receiver. Installation on your computer is almost entirely automatic.

Open **Control Panel** and check **Sounds and Audio Devices** to make sure that under **Sound Playback** in the **Audio** tab the **Music Streamer** is selected. This should all be automatic. Also check to make sure the the output volume on the computer is maximized. Here is a screen shot of what to expect:



Now open the **Windows Media Player** and proceed to pick the music that you want to play. You will need to control the system volume either from the preamplifier or receiver or the computer's volume control. **IMPORTANT! Best results will be obtained when the computer's volume control is maximized and the preamplifier or amplifier is used to control the volume. Further, we recommend that you connect the Streamer directly to your computer's USB port, avoiding the use of a Hub between the Streamer and computer. The USB cable should be kept as short as possible for best results and should never exceed 5 meters in length.**

The **Music Streamer** or **Music Streamer +** may be disconnected at any time from the computer without worry of the system crashing, device damage, or other maladies.