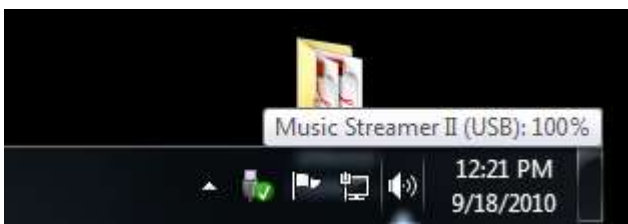
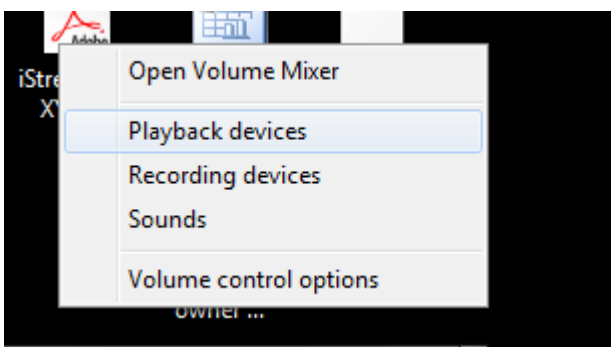


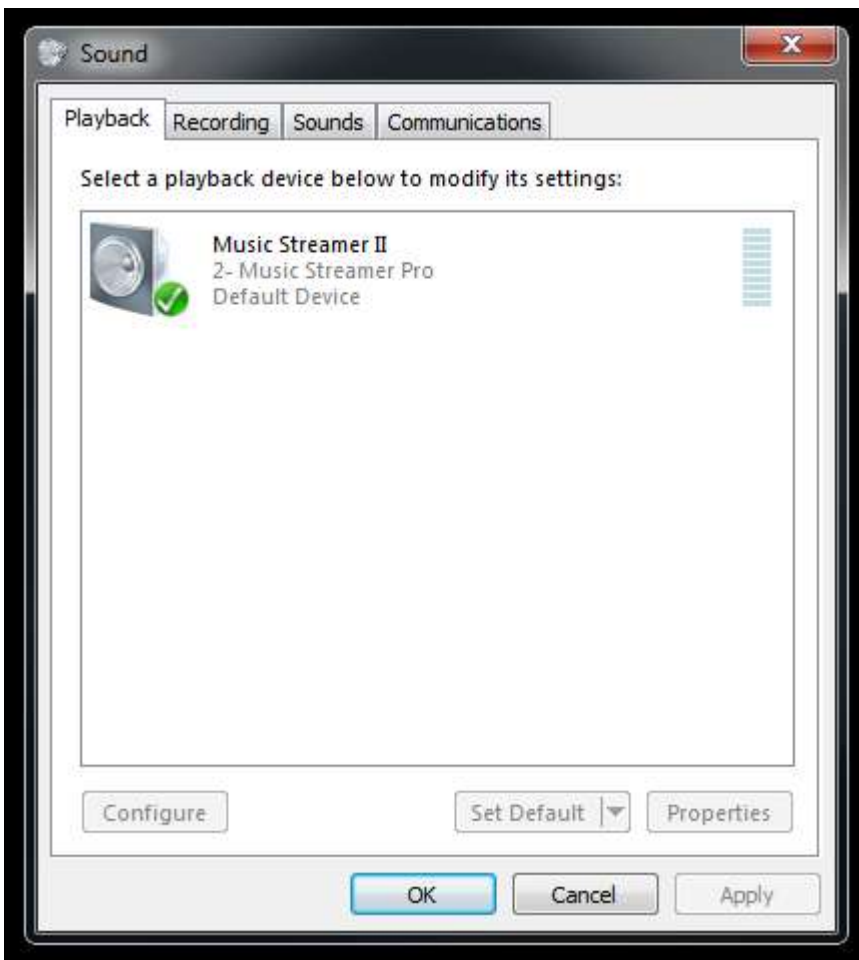
## Microsoft Vista and Windows 7 configuration instructions:



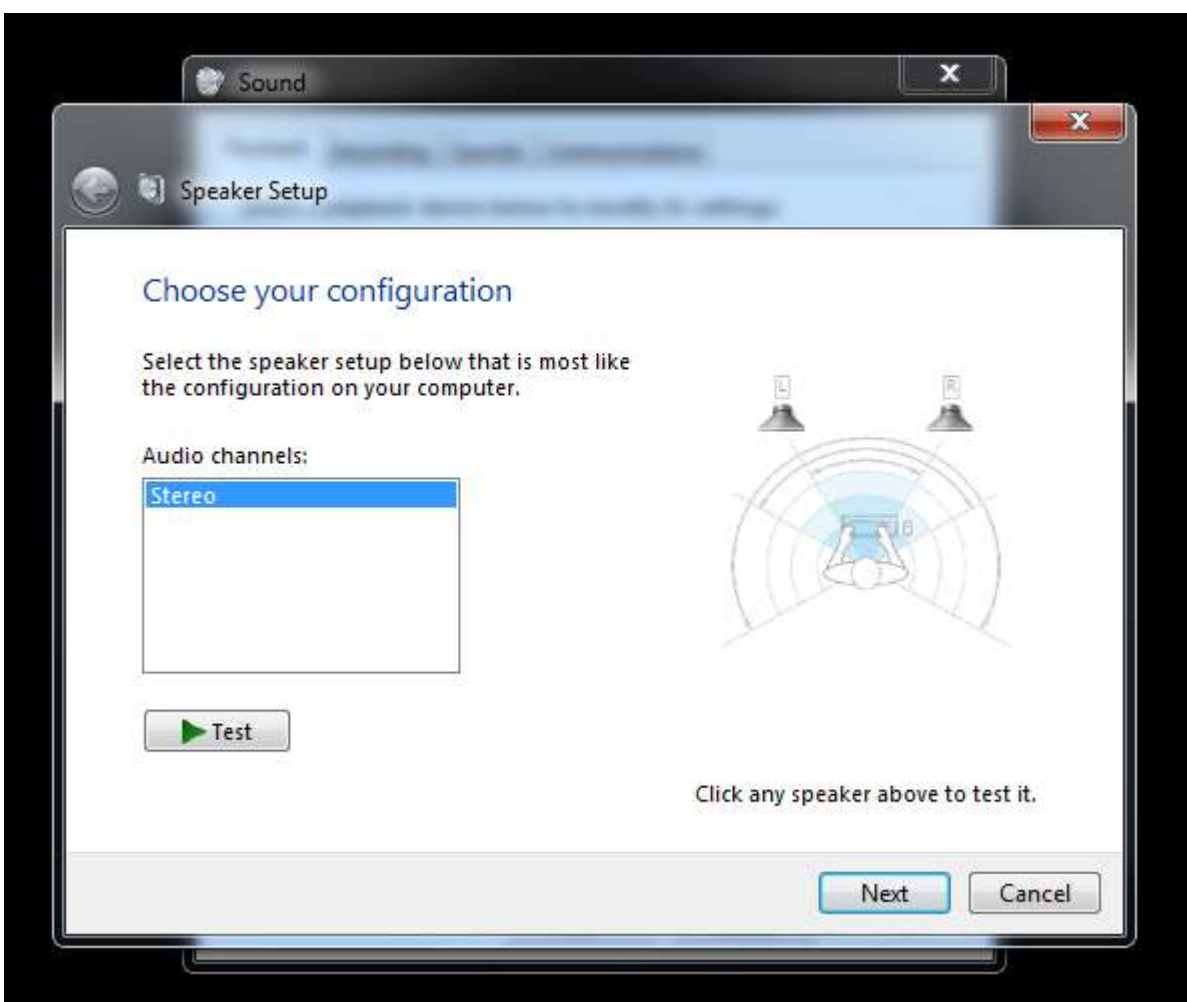
1) On the task bar, locate the speaker icon and right click



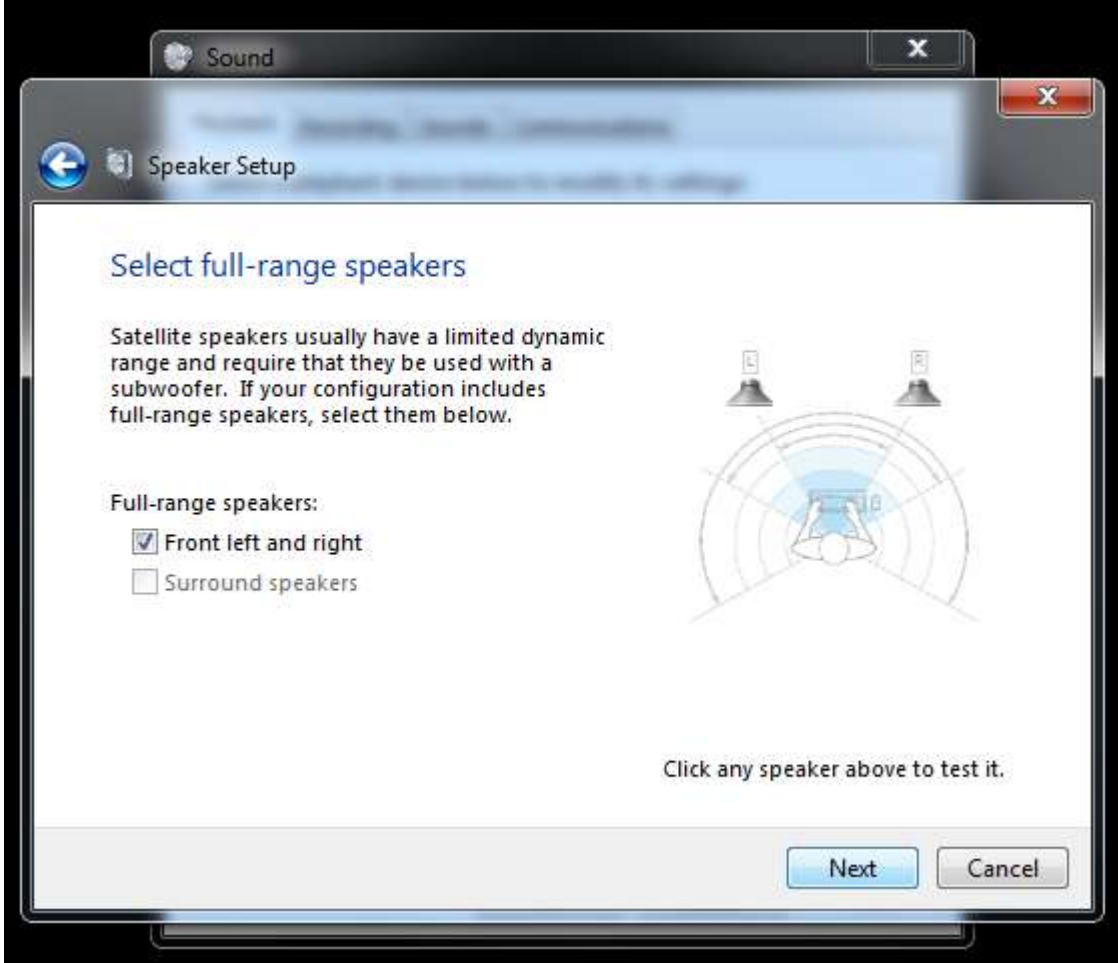
2) Select the "Playback devices" option and left click



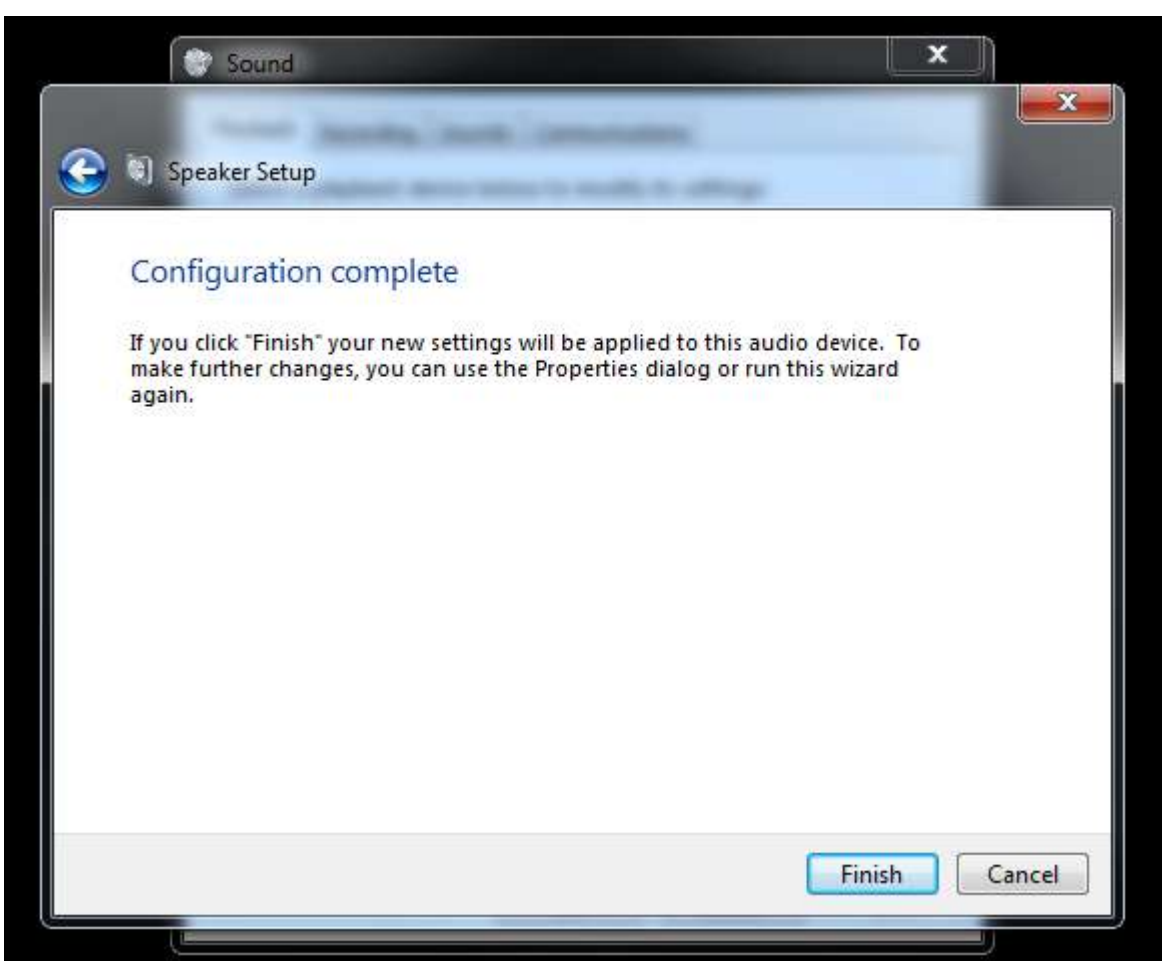
3) This will open the "Sound" dialog, here you will see one or more devices, select your Streamer by left clicking on it. This will cause it to become highlighted and it will now become the focus. If you have more than one sound device, the left click on the pull down dialog labeled "Set Default" and select your Streamer as the system default. To proceed, left click on "Configure"



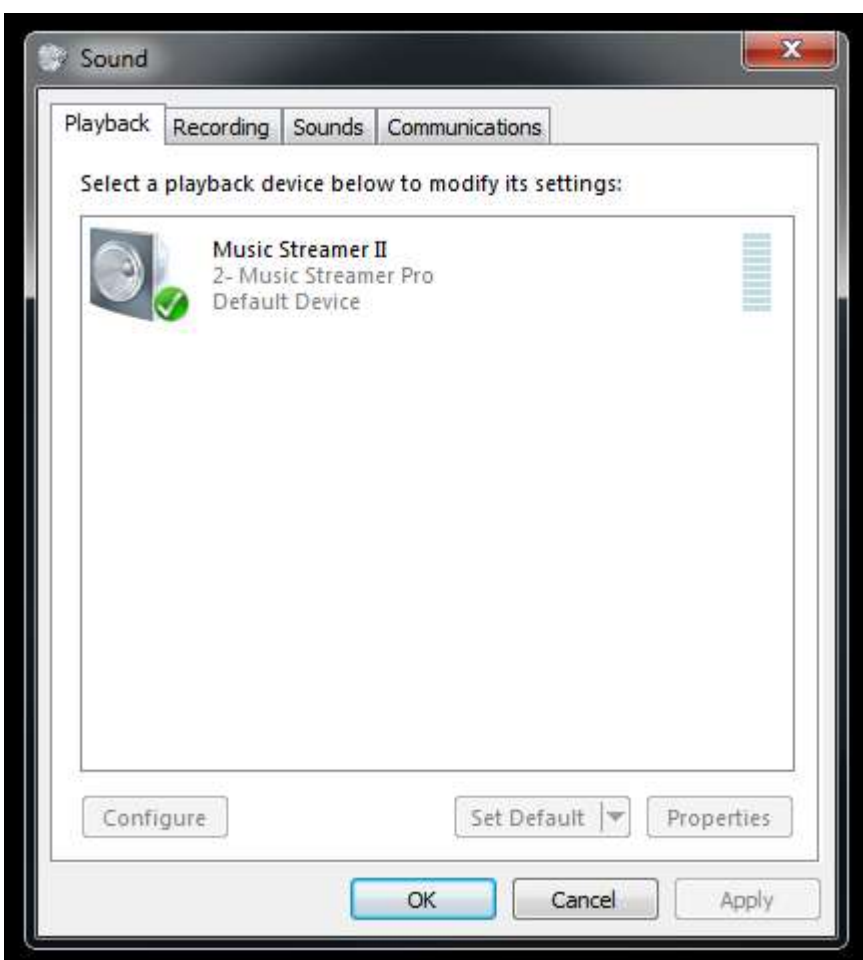
4) The "Speaker Setup" dialog will appear next. Here you can left click on "Test" to hear a sound from each of the two channels, when you are ready click on "Next"



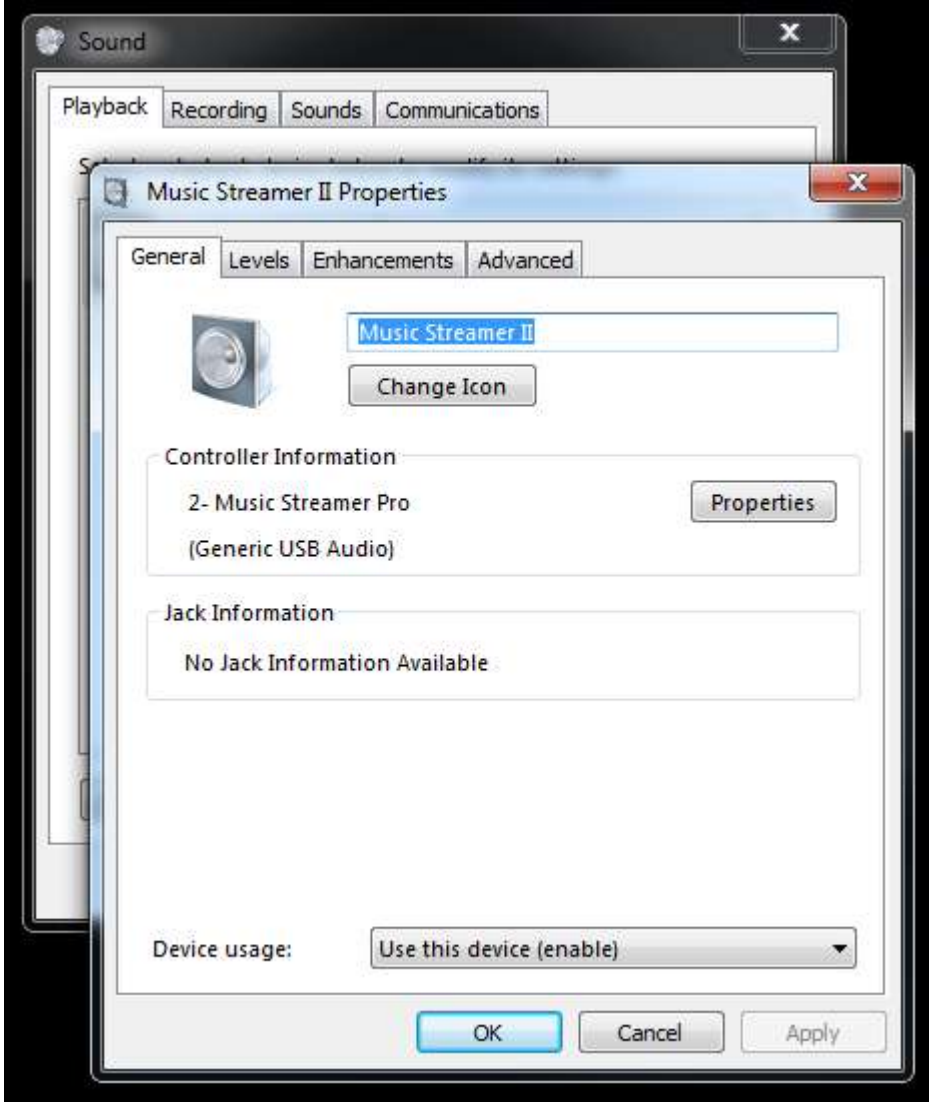
5) Check the radio button for "Front left and right" under the "Full-range speakers:" option, then left click on next to proceed



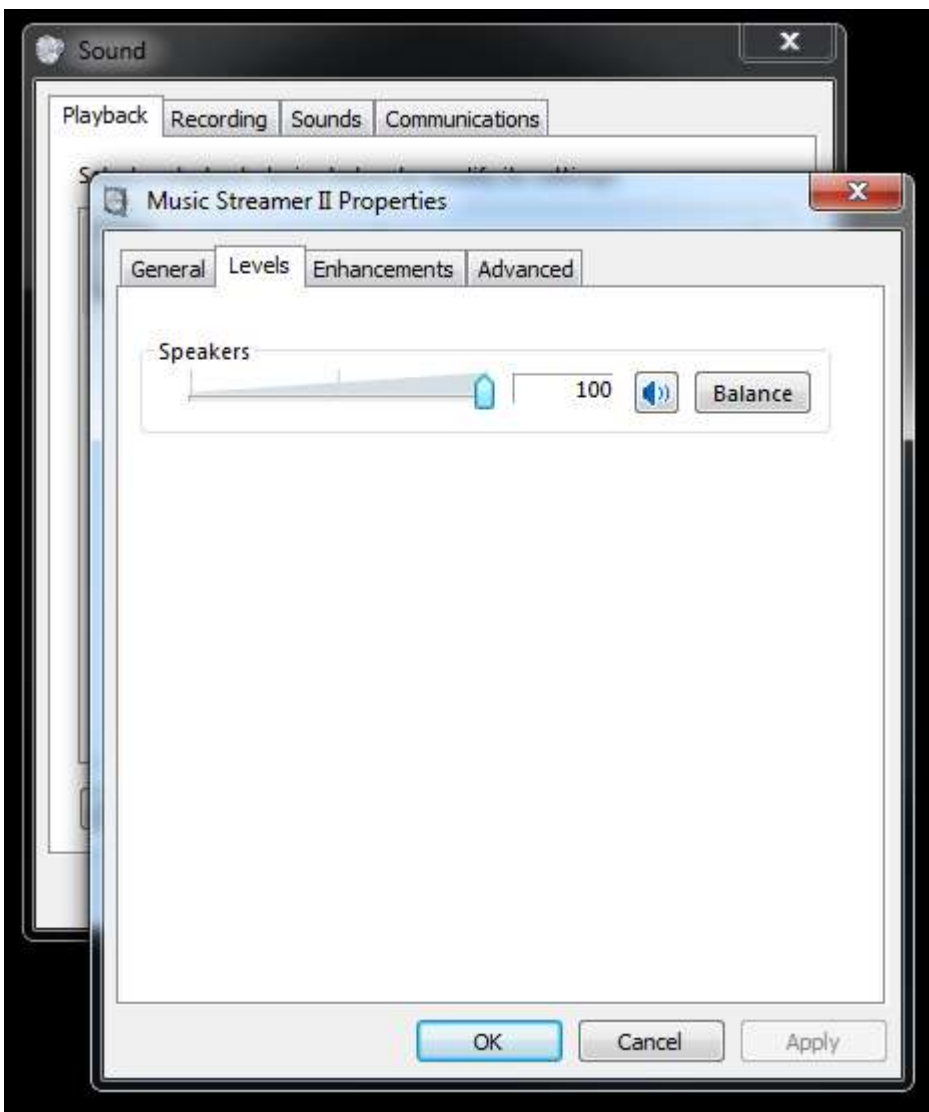
6) Left click on "Finish" to complete this portion of the setup



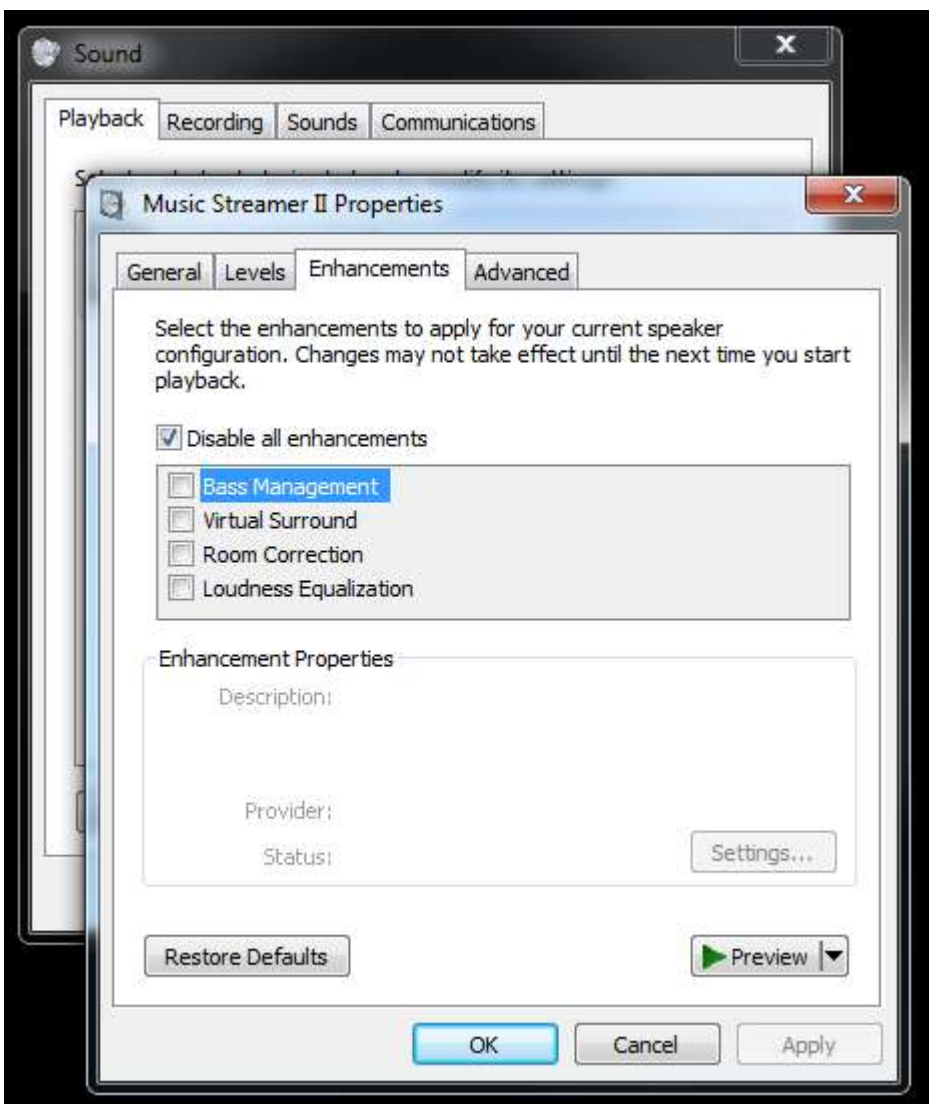
7) With your streamer still selected, left click on "Properties" to access the next group of options



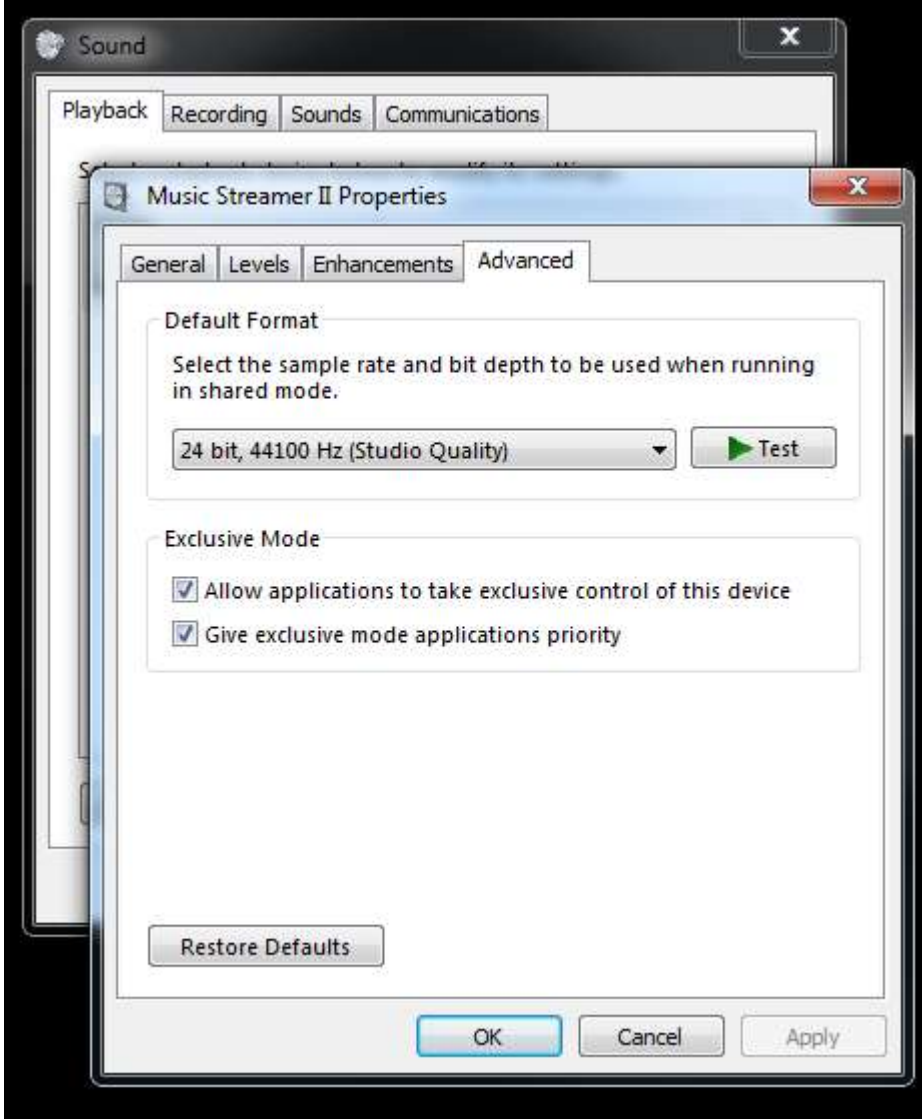
8) The "General" tab will be open, here you can name your Streamer to any name that you find useful in the box provided, when you are ready to proceed left click on the "Levels" tab



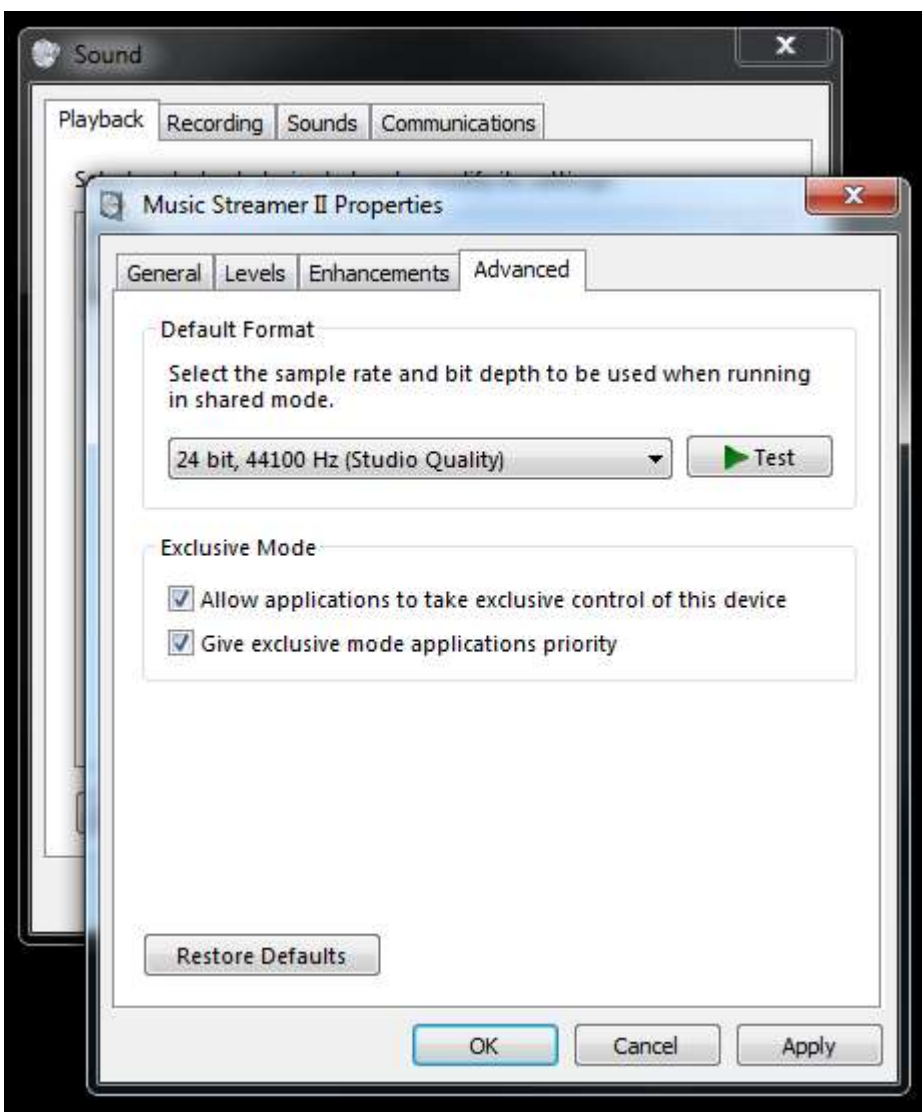
9) Here you will see several options. The "Speakers" slider should be all the way toward the right and you will see "100" in the dialog box. The icon to the right is the mute (shown in its un muted state). If your Streamer has an LED on its input panel, verify that its state matches the one shown in the "Properties" dialog. If it is out of sync (Streamer shows muted, computer shows un muted) you can accomplish a resynchronization by first left clicking on the speaker icon, it will now show muted and the LED (if present) will be illuminated on the Streamer. Next left click once again and both the Streamer and the computer will be un muted. The two will remain in sync until unpaired. When you are ready, left click on the "Enhancements" tab



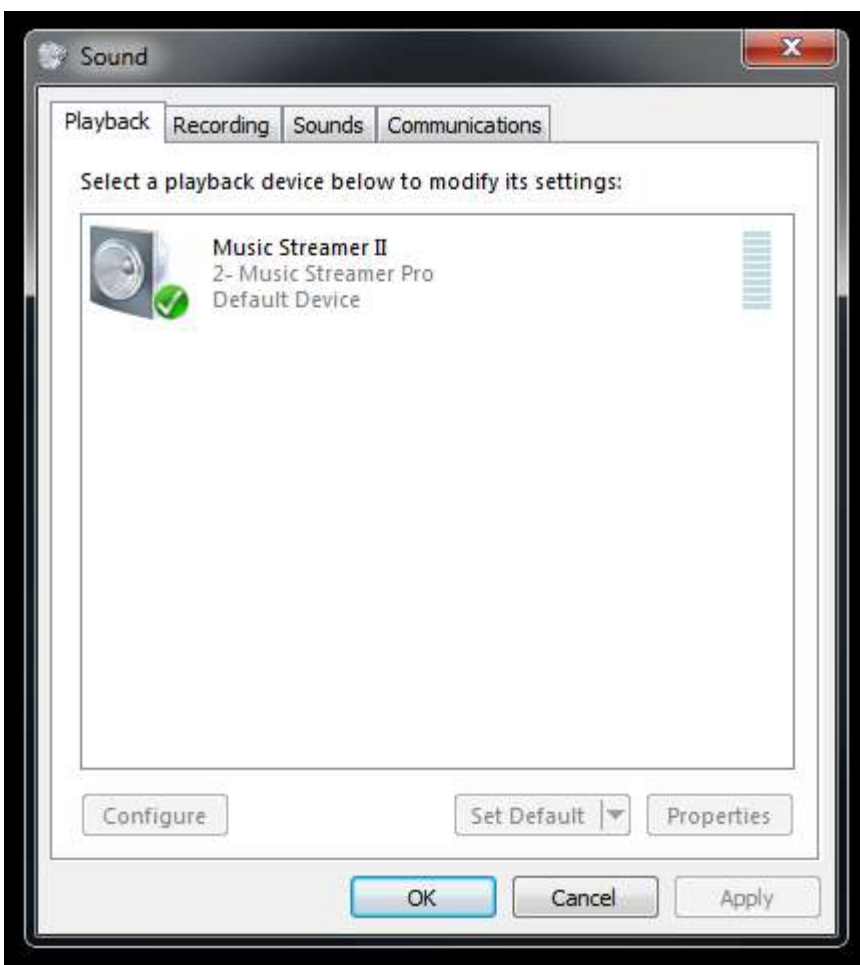
10) Be certain that the "Disable all enhancements" radio button is checked, when you are ready, left click on the "Advanced" tab



11) From the "Default Format" pull down, select the data rate which is appropriate for the material you will be playing (in most cases, this will be "24 bit, 44100 Hz (Studio Quality)"). Also make certain that under the "Exclusive Mode" dialog that both radio buttons are checked



12) When you are ready to complete the setup, left click on "Apply" followed by a left click on "OK". This will return you to the initial screen



13) The final step is to left click on "OK". You are now finished.