

HRT

STAGE





The Control Center is the heart of STAGE and when combined with the Speaker System, they form a complete solution of extraordinary fidelity. Conceived as a pairing, STAGE will satisfy any level of expectation.

STAGE is focused on achieving astonishingly low levels of distortion along with perfect tonality - all at a price point that has never before been possible. The Control Center includes the capabilities of an asynchronous USB DAC, an analogue preamplifier, and a linear analogue power amplifier. Available in speaker matching black or white finish; the Control Center was designed as an updatable platform with field-replaceable modules, accommodating different applications and connectivity as they become available. Inputs include both an asynchronous USB interface, and line level analogue, allowing

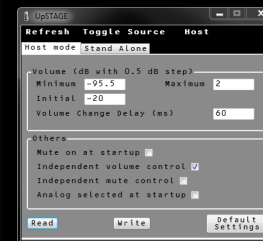
STAGE to be used with a large variety of signal sources, while providing each type with an optimized signal path.

With analogue signal processing which perfectly complements the requirements of the STAGE Speaker System, the low-frequency response is extended, along with distortion being drastically reduced.

Designed with the goal of absolute purity as the highest criteria, the Control Center utilizes the most well regarded technologies, including asynchronous transfer protocol for the digital signal path, digitally controlled analogue attenuation, analogue domain signal processing, class AB analogue power amplification, and linear power supplies, all contained in a compact package with a simple and intuitive user interface, controlled by simple front panel buttons or the included compact RF remote control.



HRT's UpSTAGE utility for user configuration of the Control Center.





The STAGE Speaker System when paired with the STAGE Control Center together form a complete audio system of extraordinary fidelity.

The design of the STAGE Speaker System started as a blank canvas. Every component of the Speaker System, even the drivers, were designed and tooled from the ground up. Not being tied to 'off the shelf' components intended for other applications and free to explore each and every aspect of the product; this freedom allowed HRT to develop a Speaker System that exceeds what has previously been possible. Each component has been optimized for its task, and the overall goal of vanishing low distortion has been the driving motivation for each decision.

Extensive use of injection-molded structures have made otherwise impossible shapes both possible and practical. Details such as frames for the woofers, acoustical chamber for the tweeter, internal bulkhead bracing, unified baffle, and even the enclosure itself all become a reality made possible by the three dimensional freedom molded structures allow.

Not to be out done by the structural elements, the magnetic design of the STAGE Speaker System drivers is the finest possible. Instead of the more common over-hung voice coil approach, both the woofer and tweeter used in the STAGE Speaker System use under-hung voice coils, and include modulation reducing magnetic shorting rings. With this design, the drivers' voice coils are always in a very linear part of the motor assembly, even under heavy-signal conditions. Even the voice coil impedance is unique, allowing for a parallel-connected trio of woofers made possible by their atypically high impedance. This configuration allows for the best low frequency damping when paired with the dedicated electronics of the STAGE Control Center.

When combined with the unique shape of the enclosure and its distributed woofer array, the STAGE Speaker system is beautifully

Together, these elements make STAGE a superb audio system for desktop, gaming, home audio/video systems, professional audio mixing, mastering, and commercial installations. HRT's exacting use of the most appropriate and modern materials, the highest performance components, and the most advanced manufacturing technologies combine with absolute focus on sonic fidelity to complete STAGE – a unique and unrivaled fully modern and compact audio system solution that is here to be enjoyed by all.

With its un-colored tonal balance, remarkable dynamic response, eye-popping 3-D spatial presentation, and low frequency capabilities that will exceed all expectations, STAGE is capable of playing all types of music and sound tracks with stunning realism. We invite you to experience STAGE for yourself; prepare to have your expectations exceeded!



Specification Control Center

DAC	
Sample Rate	up to 96 kHz
Bit Depth	up to 24 bit
USB transfer protocol	asynchronous
Jitter contribution (DC to 30 kHz)	>130 dB below full scale
Preamplifier & attenuator	
Line input impedance	20k Ohm
Attenuator step size	.5 dB
LF output impedance	500 Ohm

Power Amplifier	
Class of operation	AB
Maximum power output	70 Watts / channel
Frequency response (20 Hz - 20 kHz)	+0 db / -.2 dB

Power requirements	
Mains	115/230 VAC 50/60 Hz, 220 VA
USB	250 mA

Mechanical	
Dimensions (envelope H x W x D)	8.5" x 6.25" x 8"
Weight	8.5 pounds
Output connector	2mm x 6.5mm coaxial

Specification Speaker System

Electrical	
Impedance (minimum)	7 Ohm
Impedance (maximum)	39 Ohm
Crossover	2.8 kHz (2nd order)
Sensitivity	84.5 dB @ 1 meter w/ 2.83 V
Distortion	<.3% @ 90 dB SPL
Power handling (system)	100 Watts
Frequency Response (45 Hz - 20 kHz)	+/- 2 dB(w/ Control Center)

Drivers	1x 28mm
Tweeter	3x 70mm
Woofer	25.5mm 4 layer, Kapton former
Voice Coil (diameter)	Under-hung, with shorting ring

Acoustical	
Alignment	B4 (+ 4th order electrical HP)
Vent	38mm rear facing (with flared terminations)

Mechanical	
Dimensions (envelope H x W x D)	15" x 6.25" x 7.25"
Weight (each)	9.4 pounds
Mounting bracket	2x M6 inserts (60mm on center)
	2mm x 6.5mm coaxial